

Turning Profits Around the World

Jern Yao has been working on developing new mechanism all the time, and we recently have developed many new mechanisms, such as:

多年來正曜不斷推陳出新，新機構一直陸續發展中：

- Transfer housing lift and turn system: This new technical transfer system allows operators set up the transfer easily.  
新型夾仔台90度旋出外調機構
- Die & Punch QTC system: This system helps operators change over outside of machine.  
快速換模系統
- All Digital Motorized Control: This includes K.O adjustment, Stopper adjustment, feed length adjustment.  
人機數位化調整系統
- 7th transfer: This is to clamp the final product to the conveyor for the soft landing.  
產品防碰撞、夾仔與輸送機系統
- K.O. forced homing system: This reduces the noise during the forging.  
後通主桿強制拉回、降低噪音
- Server Feeding System: This system allows to feed without ratchet changed.  
伺服送料機構，免更換插齒



Brand-new 13,500 m<sup>2</sup> Plant I factory has started operation in September 2007.  
4,300 m<sup>2</sup> Plant II has also started operation at the end of 2010.  
The construction of its 3rd phase of plant is in preparation.

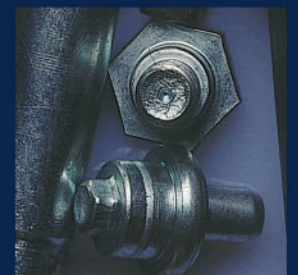
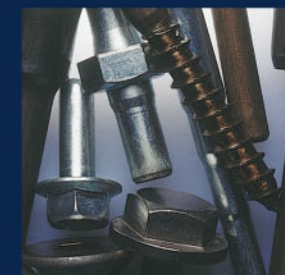
正曜第一期新廠佔地約4,100坪，於2007年九月正式開始營運。  
第二期廠房，佔地1,300坪，亦已完工於2010年底開始營運。  
第三期廠房籌備中...

JERN YAO

State-of-the-Art  
Cold Form Machines



- Bolt Former 螺絲成型機
- Nut Former 螺帽成型機
- Parts Former 特殊零件成型機
- Thread Rolling Machine 搓牙機
- Nut Tapping Machine 攻牙機



JERN YAO



JERN YAO ENTERPRISES CO., LTD. 正曜企業股份有限公司

ADD: NO. 109, SHENGLI ROAD, RENDE DIST., TAINAN CITY, 71758 TAIWAN 台南市仁德區新田里勝利路109號  
TEL: 886-6-270 0066 (Sales) • 886-6-270 0011 (代表號) <http://www.jernyao.com>  
FAX: 886-6-270 0055 (Sales) • 886-6-270 9911 (代表號) [E-mail: sales@jernyao.com](mailto:sales@jernyao.com)

JERN YAO ENTERPRISES CO., LTD. ■ SINCE 1993





# INDEX

- 1** Company Introduction 公司簡介
- 3** R&D / Quality Guaranty 研發&品質保證
- 5** Advanced Technology 創新研發技術
- 7** Bolt Formers 螺絲成型機
- 9** Nut Formers 螺帽成型機
- 11** Parts Formers 特殊零件成型機
- 13** Precision Control & Assurance 加工精度之控管及保證
- 14** Electrical Control Design & Real-Time Machine Status Monitoring 電控設計&智能機械聯網監控
- 15** JERN YAO Sales Agents 正曜代理



Jern Yao has earned an outstanding reputation in its field by focusing on Technology, Quality and Service. Our mission is to provide the highest quality machinery utilizing the latest technology and methods.

Jern Yao machines have established their reliability by providing accurate and high speed production as well as rigidity and stability of operation. The result is to provide you with the most competitive edge. With a large range of models to choose from and advanced customization abilities, you can be assured that there is a Jern Yao machine ready to meet your most demanding production requirements.

正曜公司以其一貫的執著精神，不畏外在環境的衝擊，堅持服務及品質，並持續其最新之研發技術工作。多年來的努力耕耘，正曜出品的設備在業界已經具有領先指標的地位，這份成果是來自於正曜公司秉持其經營理念(高精度)、(高產能)、(高強度)、(高穩定度)，此四高特性為我們的客戶群帶來最大的生產收益。

*SERVING THE NUT, BOLT AND PARTS  
INDUSTRY WORLDWIDE*

## A Wide Variety of Parts Can Be Produced by **JERN YAO** Machines

- Bolt Former
- Nut Former
- Parts Former
- Thread Rolling Machine
- Nut Tapping Machine



Produced by  
**JBF Series 3 Station Bolt Former**  
■ Part sizes: 3/16" (M4) - 1 1/4" (M30)  
■ Part length: 10 mm - 355 mm



Produced by  
**JNF Series 5 / 6 Station Nut Former**  
■ Part size: #8 (M5) - 1 1/4" (M30)



Produced by  
**JBF Series 4 Station Bolt Former**  
■ Part sizes: 1/8" (M3) - 1 1/4" (M30)  
■ Part length: 10 mm - 355 mm



Produced by  
**JNL Series 5 / 6 Station Long Stroke Nut Former**  
■ Part size: #8 (M5) - 1 1/4" (M30)



Produced by  
**JNP Series 5 / 6 Station Nut Parts Former**  
■ Max. cut-off dia.: 45mm  
■ Max. cut-off length: 180 mm



Produced by  
**JBP Series 5 / 6 Station Bolt Parts Former**  
■ Max. cut-off dia.: 41 mm  
■ Max. cut-off length: 440 mm





### Company Introduction

Jern Yao Enterprises was formed in 1993. Our products include Bolt Formers, Nut Formers and Parts Formers. Jern Yao is one of the largest forming machine builders in the world building over 180 machines a year. Jern Yao has an outstanding reputation in their field providing a high level of technology, quality, service and value.

Our president, Ted Tsai and General Manager, Paul Lin have collective experience of over 60 years of machine design and building. Ted and Paul play a very active role in insuring the satisfaction of our customers. Jern Yao offers our customers over 250 different varieties of forging machines. In order to provide better service, Jern Yao had China Shanghai plant opened in 2002.

## Tough Cold Form Problems? JERN YAO Has Solutions.



When you buy from JERN YAO, you get more than just a machine. You get our commitment to performance, production capability and dependability. We insist on quality. You also get complete technical service.

Great Cold Form  
Value from **JERN YAO**



**China** Factory  
July, 2002

**Taiwan** New Factory  
August, 2007

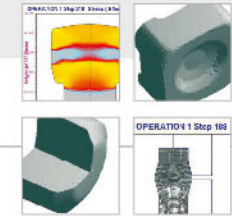
正曜企業股份有限公司創立於1993年，專營螺絲螺帽冷鍛成型機的製造及買賣。本公司於成立之初始已結合了擁有多年經驗之專業行銷人員，以及數十年研發經驗之設計人員與實際製造、組立經驗之技術人員、在蔡正得董事長以及林東峯總經理的帶領下，成功的開發出台灣最優良的冷鍛成型設備。為了就近擴大服務客戶群，正曜也在上海青浦工業園區設立正作機械(上海)有限公司，佔地約五萬平方米，並於2002年七月正式開始營運。





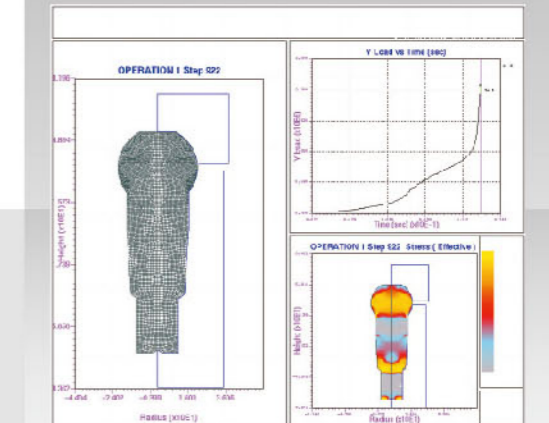
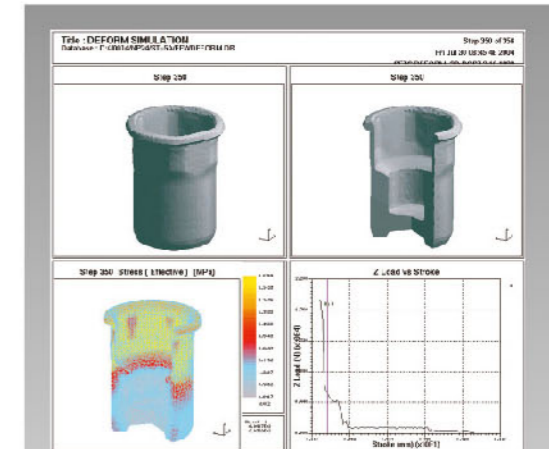
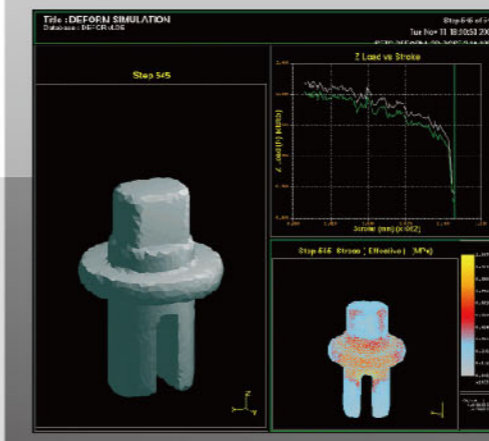
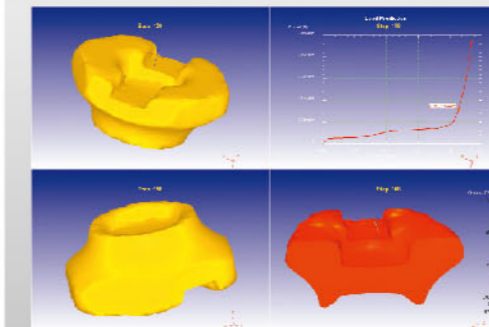
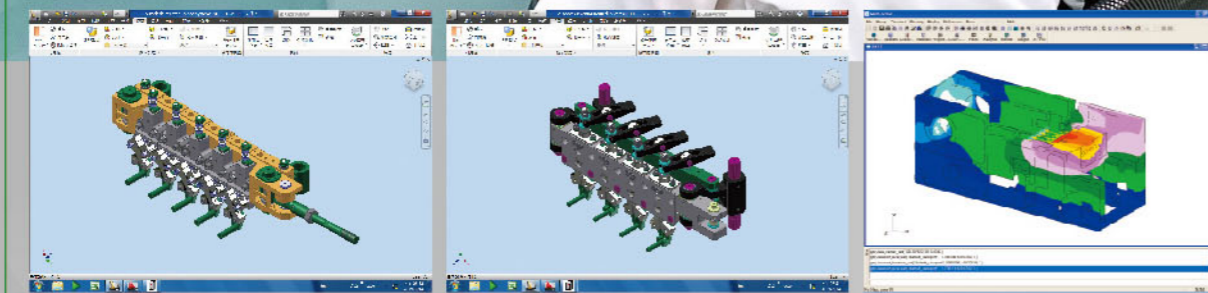
**JERN YAO**

JERN YAO ENTERPRISES CO., LTD. | P. 3-4 |



Our 2D/3D DEFORM software helps us not only develop sophisticated tooling designs but also enhance the efficiency for better tooling life. With DEFORM simulation and analysis, JERN YAO leads the trend of assisting our customers to obtain cutting edge tooling technology.

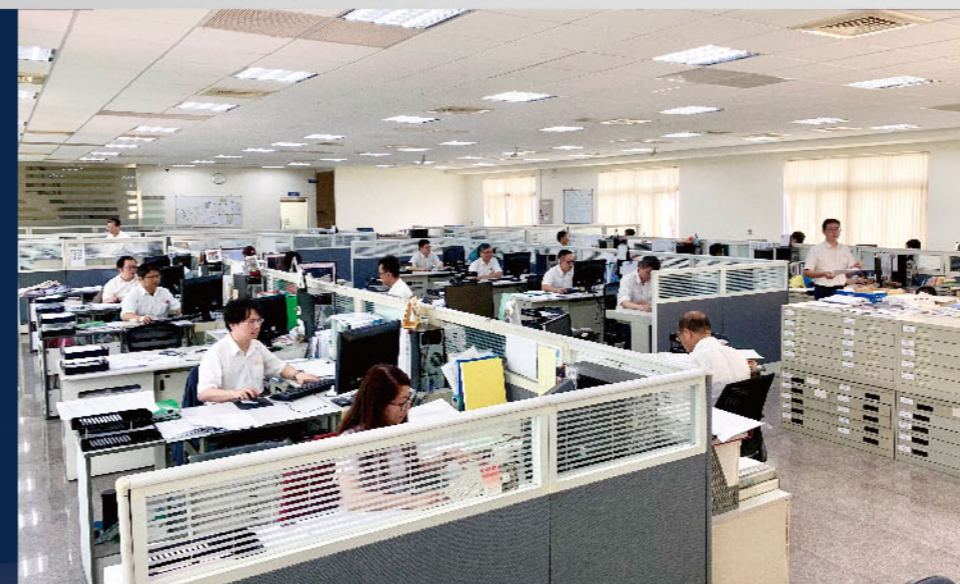
導入Deform 2D/3D鍛造分析軟體，提前實現模具設計結果與模具壽命，降低研發成本。



## R&D Quality Guarantee

JERN YAO utilizes Visual Nastran (Machine Movement Simulation) and Solidworks (3D CAD) as the R&D tools by which we can both upgrade production capacity and optimize the aggregate movement rigidity of machine.

電腦輔助本台鑄件及重要機構做應力分析，提早改造及防止再發生。



## OUTSTANDING RESEARCH AND DEVELOPMENT.

More than 25 years of ongoing R&D and manufacturing know-how has created a wide range of machines which offer the most flexible choices in nut, bolt and parts forming - all with superior production quality.

正曜公司之研發部門乃由擁有豐富設計經驗之菁英人員所組成，除了成型設備之研發外，更設置另一獨立單位，專責模具之設計及分析。



- Bolt Former 螺絲成型機
- Nut Former 螺帽成型機
- Parts Former 特殊零件成型機
- Thread Rolling Machine 搓牙機
- Nut Tapping Machine 攻牙機

Jern Yao machines integrate many exclusive or patented features, making them unique in the industry. The use of advanced CAD design, incorporating the latest engineering technology, is matched with extensive factory testing to assure peak performance and years of trouble-free operation. The manufacturing and assembly of Jern Yao machines are conducted according to the company's quality assurance policy, which demands rigorous testing and attention to detail. Our commitment to quality sets Jern Yao apart.



**Quality Control**  
Professional group



2-D measuring instrument  
固定式二次元量測儀



Vertical measuring instrument  
垂直儀



Movable 3-D measuring instrument  
移動式三次元量測儀

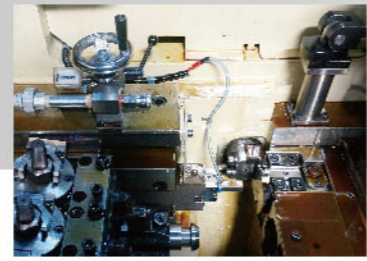
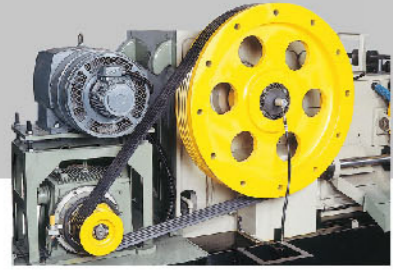
**Introducing State-of-the-Art  
Cold Form Machines by JERN YAO**

Jern Yao was certified by ISO in March 1999. It was also certified by ISO 9001:2008 in 2009 and certified by ISO 9001:2015 in 2018.

正曜公司自1999年3月正式導入ISO系統，於2009年通過ISO 9001:2008年版，並再於2018年通過ISO 9001:2015年版。

主動積極貫徹實施ISO系統融入公司管理制度中，進而回饋給客戶。





Standard 3-shaft gear box with 4/8 pole induction AC motor direct transmission mechanism.  
標準三段變速箱4/8極馬達直接傳動機構(標準)

Air clutch and brake system allows the fly wheel to keep running when in unloaded status, so as to reserve fly wheel's momentum. (Optional)  
單速變速箱6極馬達，空氣離合器傳動(選配)

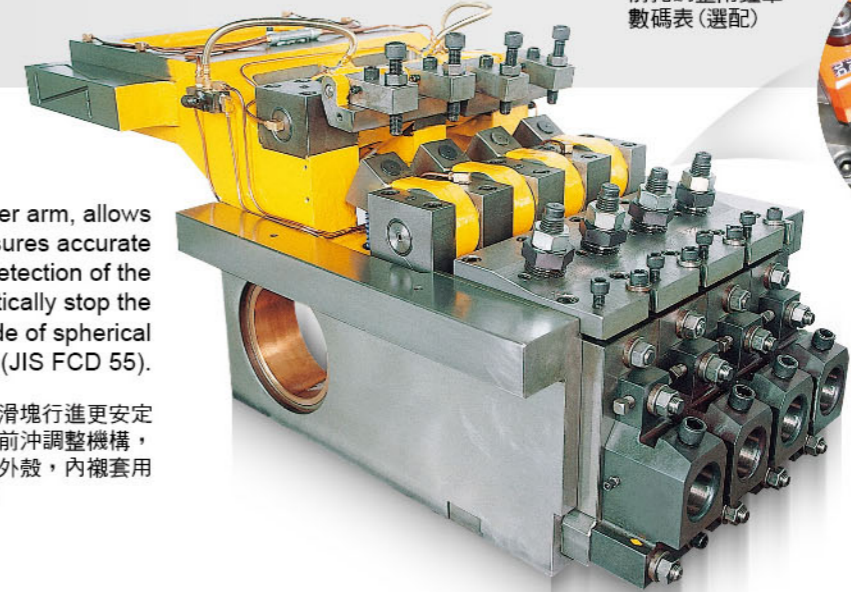
Stopper length adjustment is quickly and easily performed by a hand wheel. (Optional)  
切料長度用手輪調整加數碼錶(選配)

K.O. length adjustment is quickly and easily performed by a hand wheel. (Optional)  
後通出模內長度用手輪加數碼錶(選配)

The ram (main slide), with an over arm, allows for excellent stability and assures accurate straight line movement. Self detection of the P.K.O. overload will automatically stop the machine. The ram is made of spherical graphite iron casting (JIS FCD 55).

高精度主滑塊連結後翼設計，使主滑塊行進更安定準確，使用JIS FCD55材質獨立式前沖調整機構，斜銷可附刻度，沖模座使用合金鋼外殼，內襯套用SKD-11材質，可延長精度及壽命。

**P.K.O.**  
Digital gauge adjustment (Optional)  
前托調整附鐘罩數碼表(選配)



A box-type motorized wire straightener offers stable straightening processes. (For wire diameter over 18mm.)  
箱式整料台線徑φ18mm以上使用



A powerful cut-off mechanism with S-CAM is directly driven by the crank shaft, and moves horizontally.  
精確的切料機構，切料受力於主軸之中心



Feed length adjustment is through a servomotor system controlled by a push button. (Optional)  
可數位化的送料長度電動調整機構(選配)



Equipped with two feed rollers for smaller bolt former.  
插齒式送料機構，插嘴會抬起



Open / close type transfer fingers deftly and securely grip the blank.  
精準、簡單，可靠的彈簧式夾仔台



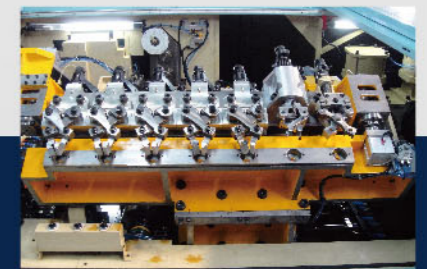
Servo Feeding System (Optional)  
伺服送料系統(選配)



Linear Feeding System (Optional)  
線性送料系統(選配)



IS TYPE pneumatic transfer system offers another option for high speed and stable transfer. (Optional)  
可快速校正中心氣壓式夾仔台(選配)



JS TYPE pneumatic transfer system offers another option for better clamping and stable transfer. (Optional)  
夾緊力強及穩定之氣壓式夾仔台(選配)

**JERN YAO**

JERN YAO ENTERPRISES CO., LTD. | P. 7-8 |

## JBF Series 2 / 3 / 4 / 5 Station Bolt Former

JBF系列 2/3/4/5模 螺絲成型機





JERN YAO ENTERPRISES CO., LTD. | P. 9-10 |

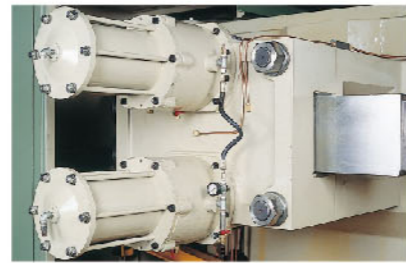
# JNF / JNL / JNFR / JNFP Series 5 / 6 Station Nut Former

## JNF/JNL/JNFR/JNFP系列 5/6 模 螺帽成型機



JNFR, JNFP series the pusher mechanism used the forced pulling-back design to improve the pusher pin forward/backward movement properly.

JNFR, JNFP 系列胚料推出機構使用強制拉回設計，改善傳統設計胚料推出桿往復動作不確實之虞



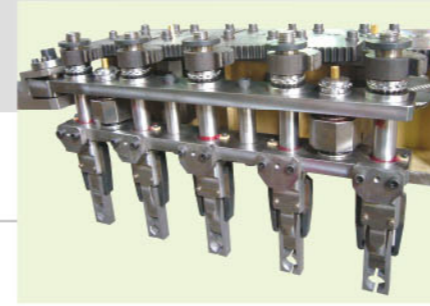
A cut-off mechanism and pneumatic cylinders are used on machines as big or bigger than the JNF-24B and smaller machines.

大台車台用切刀氣壓輔助機構



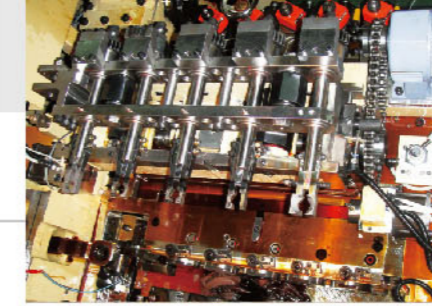
A cut-off mechanism and pneumatic cylinders are used on machines as big or bigger than the JNF-28B. Springs are used on the JNF-24B and smaller machines.

位於切刀側上的夾仔台共軛凸輪傳動機構，切刀與夾仔台傳動確實分離



The chuck transfers on the 5 station Nut former move straight across or rotates 180 degrees depending on the requirement.

標準螺帽夾仔台，母夾有自動脫離保護



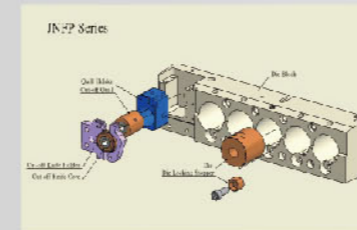
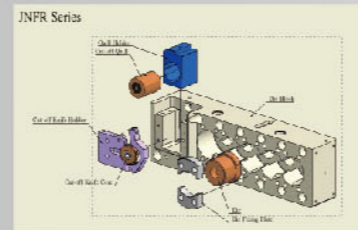
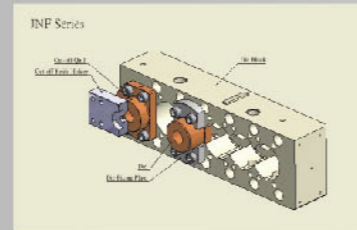
Newer and lighter nut former transfer mechanism allows high speed operation.

先進輕量化夾仔系統，有利於高速運轉



Special transfer finger system

特殊客製化可撐開式夾仔機構



The nut former series is also equipped the ram (main slide) with an overarm which allows for excellent stability and assures accurate straight line movement.

正囉螺帽車系列亦搭配高精度主滑塊，連結後翼設計，使主滑塊行進更安定準確

The ram (main slide), with an overarm, offers excellent stability and assures accurate straight line movement.

# P.K.O.

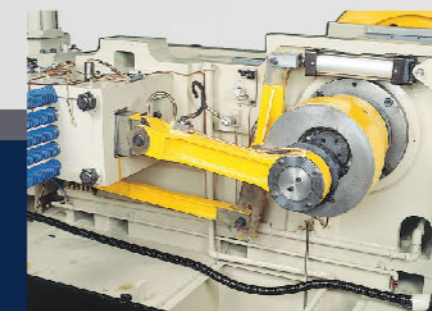
A mechanism is available as an option.

主滑塊連結後翼設計，可以確保主滑塊的前後運動更精確且穩定  
主滑塊可以選配搭載前托機構



A powerful cut-off mechanism with S-CAM is directly driven by the crank shaft and moves horizontally.

強力的剪斷機構，由主曲軸直接驅動  
S型凸板做水平移動



Stable feeding mechanism

安定可靠的送料機構



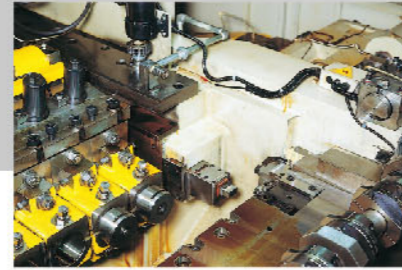
JY provides customized cutter, quill, and die block (optional).

正囉亦可提供客製化之切刀，切模及母模安裝方式(選配)





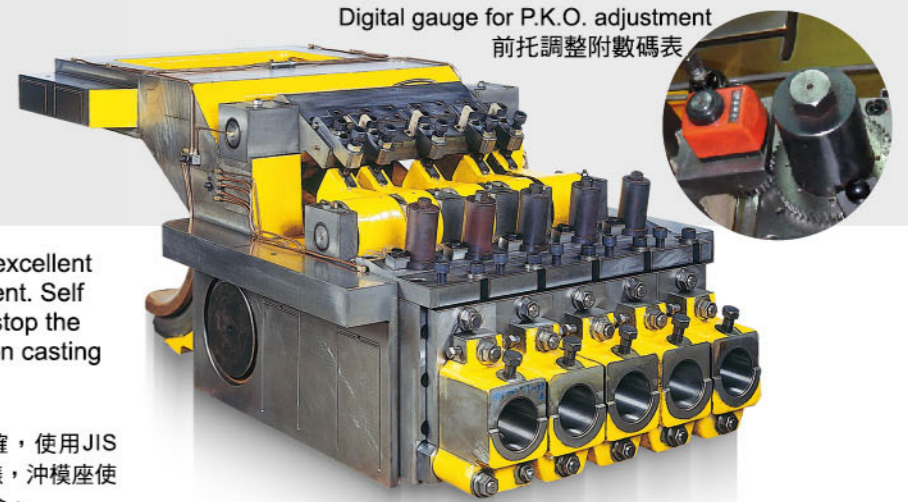
Dial Control Style Slow Jog System  
手搖輪慢寸動功能



Motorized / digital stopper adjustment helps operators to get a quick and precise cut-off length. (Optional)  
人機數位化切料長度調整 (選配)



Motorized / digital K.O. length adjustment saves operators a lot of tooling change-over time. (Optional)  
人機數位化打模內長度調整 (選配)



Digital gauge for P.K.O. adjustment  
前托調整附數碼表

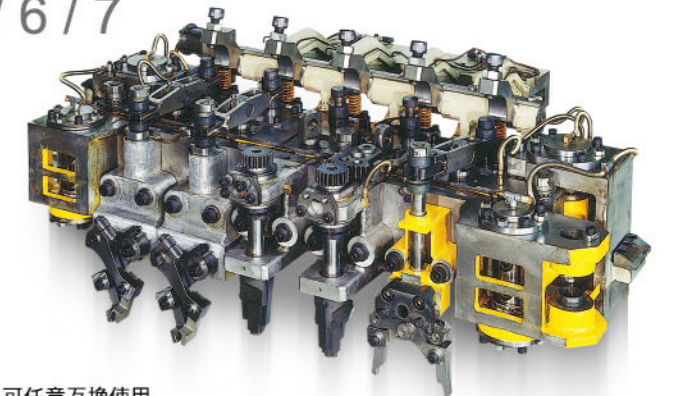
The ram (main slide), with an over arm, allows for excellent stability and assures accurate straight line movement. Self detection of the P.K.O. overload will automatically stop the machine. The ram is made of spherical graphite iron casting (JIS FCD 55).

高精度主滑塊連結後翼設計，使主滑塊行進更安定準確，使用JIS FCD55材質獨立式前沖調整機構，斜削調整量可加數字錶，沖模座使用合金鋼外殼，內襯套用SKD-11材質，可延長精度及壽命。



JERN YAO ENTERPRISES CO., LTD. | P. 11-12 |

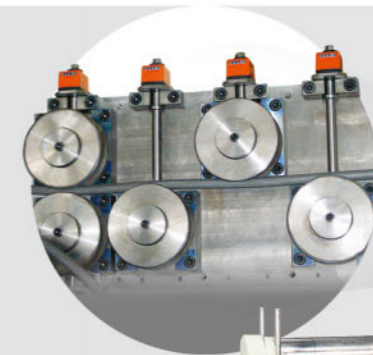
## JPF / JNP / JBP Series 5 / 6 / 7 Station Parts Former JPF/JNP/JBP系列 5/6/7模 零件成型機



### UNIVERSAL TRANSFER FINGER SYSTEM

■ Depending on the forged parts, the three kinds of transfer fingers can be installed at any station. (Optional)

多功能複合式夾仔台，可張開、翻轉、旋轉90度、大張開式，可任意互換使用



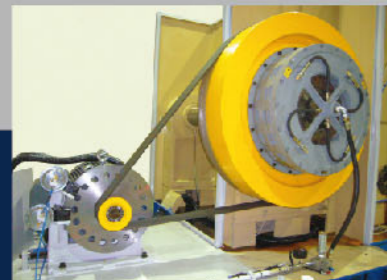
Digital gauge for straightener rollers  
整料輪可加數字錶



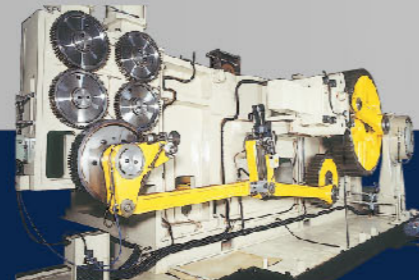
Extra set of die and punch block allows operators to set up another job while machine is running. (Optional)  
公母模外吊機構可供快速安裝模具以節省換規格時間 (選配)



New technical transfer system, Transfer housing lift and turn system, allow operators to set up the transfer easily. (Optional)  
新型夾仔台90度旋出外調機構 (選配)



Fast and positive operation by air clutch and brake control.  
大扭力直接啟動分離式空氣離合器



Motorized / digital feed length adjustment with length indication screen on the operator control panel. (Optional)  
人機數位化送料長度調整機構 (選配)

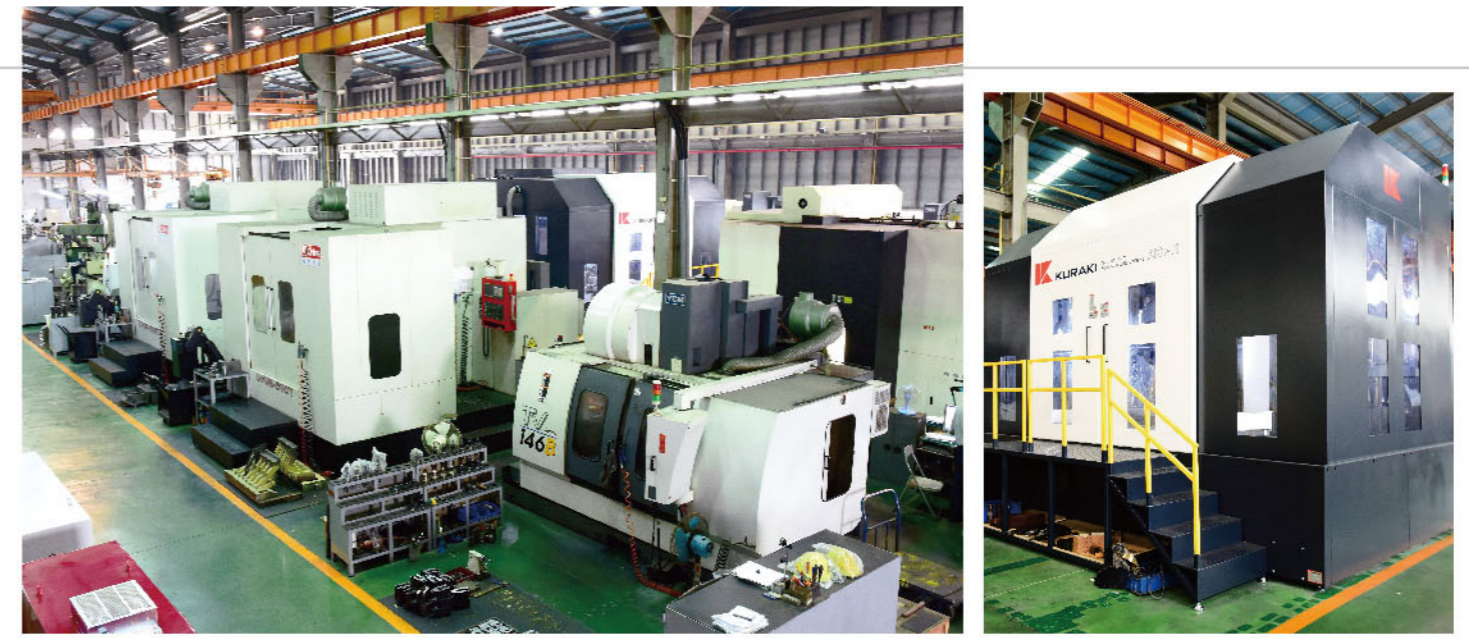


New mechanism allows for P.K.O. adjustment.  
可變3段行程前通出機構(P.K.O.)，方便模具設計及調整 (選配)

■ The horizontal wire stand (pay off reel) with a hydraulic pointed straightener is easily and quickly operated for heavy wire rods.  
臥式線架搭載油壓整頭機構使更換線材與整料更容易，快速



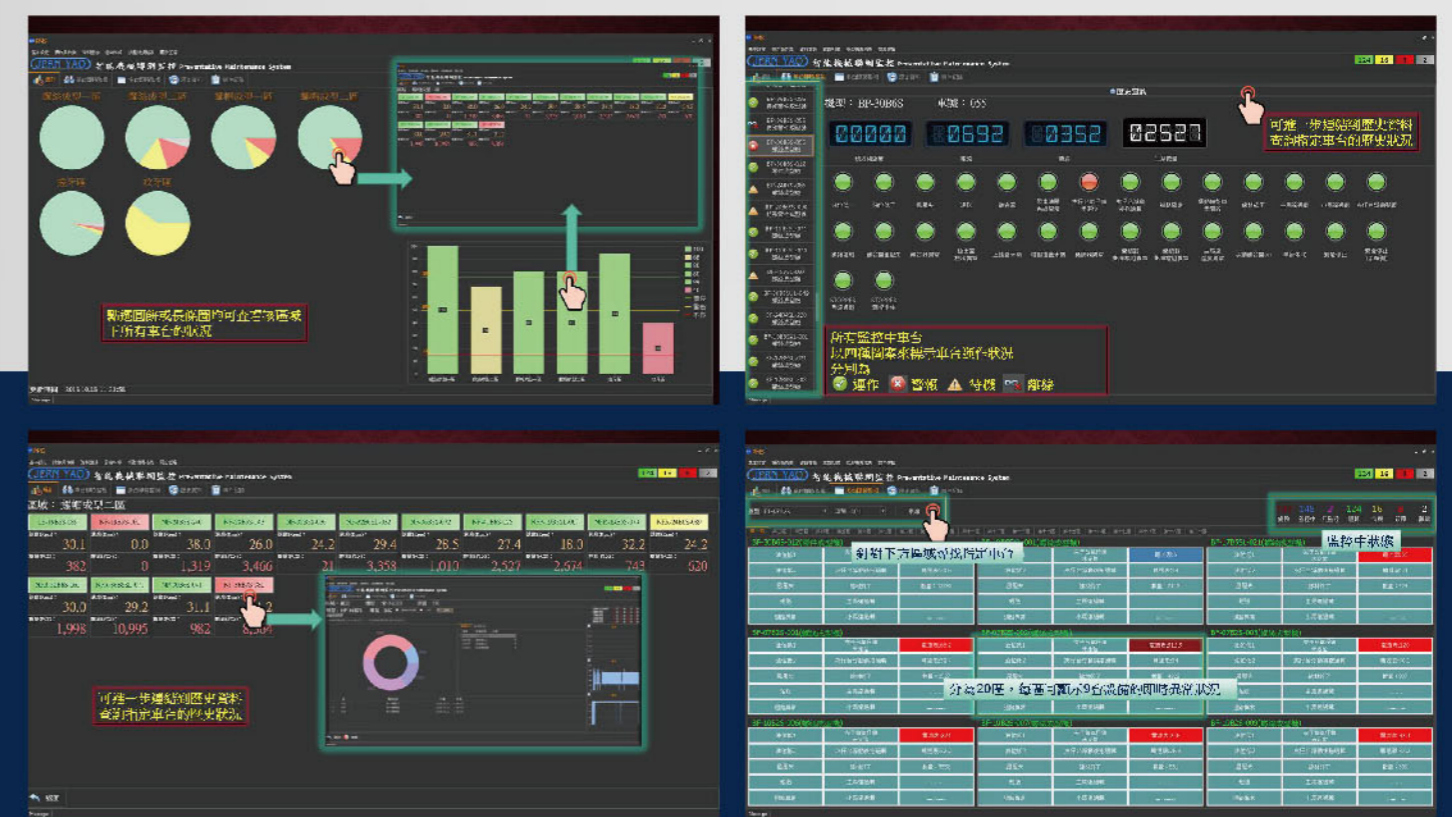
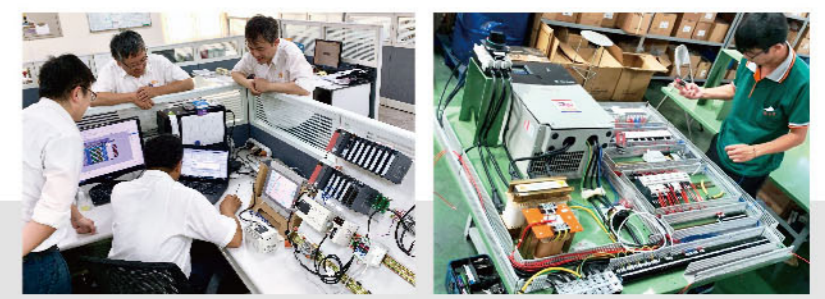




## Electrical Control Design & Real-Time Machine Status Monitoring

電控設計 & 智能機械聯網監控

- Electrical control system (circuit design, PLC design and assembly) is 100% made in-house, no sub-contractors.  
電控系統(電路、PLC設計、施工) 100%廠內自製，不外包。
- Can provide immediate support when clients encounter electrical related issues because all information are recorded in-house.  
客戶端遇到電控系統問題時可即時提供協助(因所有資訊都在廠內)



## Precision Control & Assurance

Various new CNC milling machines joined the team to enhance components modification capability and to achieve a higher level of quality control.

為了加強零件自主加工與品質控管能力，正曜在廠內增加多台的新型加工機。



## Turning Profits Around the World

We Currently Supply Machines to the Following Countries and Areas: 目前正囉成交的地區與國家

### ASIA

- CHINA
- HONG KONG
- INDIA
- INDONESIA
- IRAN
- ISRAEL
- JAPAN
- KAZAKHSTAN
- KOREA
- MALAYSIA
- PHILIPPINES
- PAKISTAN
- RUSSIA
- SAUDI ARABIA
- SINGAPORE
- TAIWAN
- THAILAND
- TURKEY
- U.A.E
- VIETNAM

### AUSTRALIA

- AUSTRALIA

### AMERICA

- ARGENTINA
- BRAZIL
- CANADA
- MEXICO
- U.S.A.

### AFRICA

- NIGERIA
- SOUTH AFRICA

### EUROPE

- BELARUS
- CROATIA
- CZECH REPUBLIC
- FRANCE
- GERMANY
- ITALY
- PORTUGAL
- POLAND
- SLOVENIA
- SPAIN
- SWEDEN
- UKRAINE
- UNITED KINGDOM
- SWITZERLAND
- IRELAND



## Marketing & Service

"Good service is good business", Jern Yao sales representatives and our team of expert service engineers all have years of practical experience that can be applied in assisting worldwide clients with technical issues such as machine operations and cold forming feasibility analysis to achieve the goal of maximizing profits for our clients. Upon request, our team of experts can be sent at moment's notice.

正囉公司本著服務與行銷合一的理念，公司的業務人員都具有豐富之實務經驗，可隨時協助客戶解決技術上的問題，並隨時提供成型技術的諮詢與機械操作資料，另有一支技術服務團隊，專門提供完善之售後服務及到廠車台巡檢及人員培訓，俾使本公司產品均能隨時為客戶帶來廣大的利潤。

## JERN YAO Sales Contacts

To provide better service, the following Jern Yao agents can be the best support:

### U.S.A Sales Sole Agent

TRUFORM EQUIPMENT, INC.  
MR. TOM PAVLOS  
14744 S MCKINLEY AVE., POSEN, IL 60469  
TEL: 1-708-897-8595  
FAX: 1-708-897-8591  
E-MAIL: tom.pavlos@truformequipment.com

### RUSSIA Sales Sole Agent

ROST GROUP & TECHNOLOGY CO., LTD  
MR. ALEXANDER BRASLAVKIY  
2F-1, 65 HSIN-YI ROAD, SEC. 3 TAIPEI, TAIWAN  
TEL: 886-2-278-456-75 FAX: 886-2-278-456-76  
E-MAIL: rost.group@msa.hinet.net

### JAPAN Sales Sole Agent

OSY LTD.  
MR. SHINJI OHARA  
1-6-12 HIGASHI TENMA, KITA-KU,  
OSAKA, 530-0044, JAPAN  
WAKO JYUKEN HEAD OFFICE BLDG. 3F  
TEL: 81-6-6351-8848  
FAX: 81-6-6351-8857  
E-MAIL: osyltd@skyblue.ocn.ne.jp

### KOREA Sales Sole Agent

HYUNG SUNG CORPORATION  
MR. ERIC MOON  
#3BA 727, SIHWA INDUSTRIAL COMPLEX,  
JUNGWANG-DONG, SIHEUNG-SI,  
KYUNGGI-DO. KOREA, 429-450  
TEL: 82-31-434-3450  
FAX: 82-31-434-3455  
E-MAIL: ericmoon@hyungsung.com

### GERMANY Sales Sole Agent

GWI competence in steel and cold forging  
MR. KARSTEN GRAU  
HEGESTUCK 11, 58640 ISERLOHN, GERMANY  
TEL: 0 23 71 / 90 40 20  
FAX: 0 23 71 / 90 40 40  
E-MAIL: kgrau@gwi-iserlohn.de

### INDIA Sales Sole Agent

M/S M.K. THAKKER (Jern Yao India Office)  
MR. J.M. THAKKER  
MALHOTRA HOUSE 4TH FLOOR,  
OP G. G.P.O, MUMBAI 400001, INDIA  
TEL: 91-22-2269 7383/1674  
FAX: 91-22-2265 4598  
E-MAIL: thakkerjm@gmail.com  
thakkermk@gmail.com

### UK / POLAND Sales Sole Agent

PAPADELTA LTD.  
MR. PAUL DENNING  
12 EAST WING CALDECOTE HALL  
WARWICKSHIRE UNITED KINGDOM CV10 0UN  
TEL: +44 7775 860694  
E-MAIL: paul.denning@virgin.net

### TURKEY Sales Sole Agent

BIMEKS CELIK  
MR. HASAN TUGRUL GOKAGACLI  
ITOSB 10. CADDE NO.: 9 P.K. 34959 TEPEOREN-TUZLA, ISTANBUL, TURKEY  
TEL: 90-216-5930474 FAX: 90-216-5930486 / 930487  
E-MAIL: tugrul@bimekscelik.com

### SPAIN Sales Contact

FASTMATEC FASTENER MANUFACTURING TECHNOLOGY, S.L.  
MR. HERMAN WESTHOFF  
EXTRAMURS 11, 17256 ST. FELIU DE BOADA - SPAIN  
E-MAIL: hwesthoff@fastmatec.com  
SKYPE: Fastmatec-hermanwesthoff  
TEL: +34 610 466472

### SWEDEN Sales Contact

IPM TOOL AB  
MR. CHRISTER WARNQUIST  
MAGASINSVAGEN 3, SE-691 42 KARLSKOGA, SWEDEN  
TEL: 46 586 597 10 FAX: 46 586 577 80  
E-MAIL: ipmtoolab@telia.com



(55 51) 98163 5745 | (55 51) 99116 1001  
rwd-international.com.br  
@rwd.international



Jern Yao is now recruiting Sales Elites and Representatives from Canada, Mexico, Middle-East and East European countries to join Jern Yao's Global Sales Marketing Network.